

PlanW

**TREATMENT PLANNING SYSTEM
FOR EXTERNAL RADIOTHERAPY**



COMPREHENSIVE TREATMENT PLANNING

PlanW is the comprehensive treatment planning system for external radiotherapy.

PlanW supports calculation of treatment plans for both radionuclide and linear acceleration treatment units. Both photon and electron beams are supported.

PlanW works either as a standalone workstation or as a networked system with unlimited number of interconnected workstations.

PlanW planning stations can be seamlessly integrated into a common hospital network.

PlanW is an open system supporting data from CTs, simulators and Record & Verify systems via DICOM 3 format.

PlanW fully supports DICOM compatible import and export.

Beam data input obtained from water phantom scanning software is directly supported.

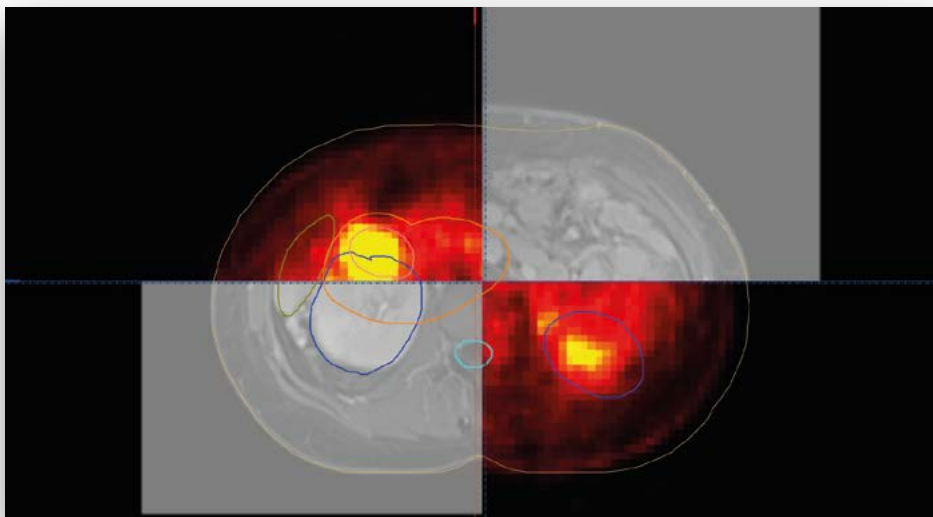
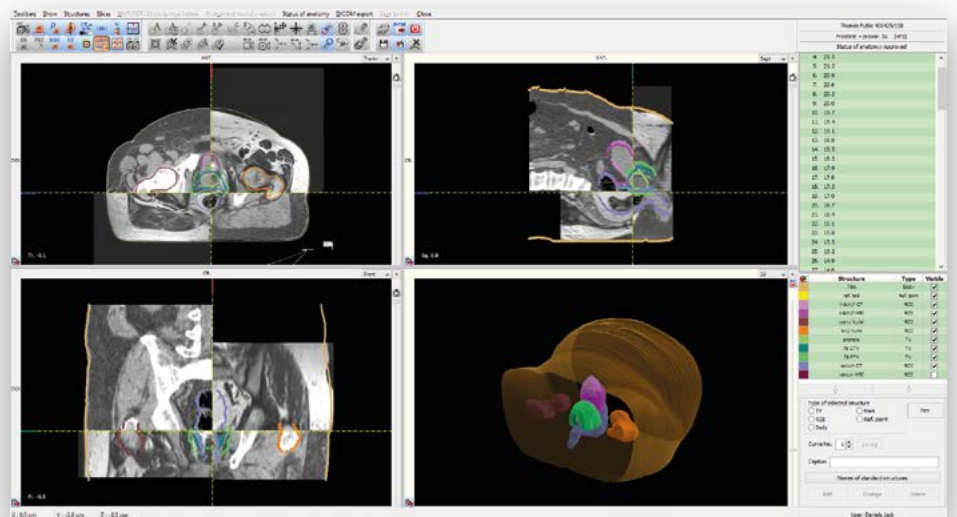
NEW, INTUITIVE, USER-FRIENDLY

New, modern interface supporting multiple languages.

Support for modern treatment techniques:

- 3D conformal radiation therapy
- IMRT, IMAT
- DRR calculation

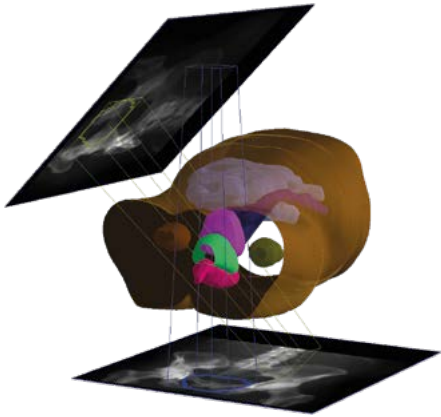
PlanW includes customizable clinical profiles and plan templates that provide efficient, fast and simple plan generation.



Multimodality image registration:

- CT, PET, MRI
- virtual simulation
- manual and semi-automatic contouring tools
- 3D contouring tools.
- non-uniform delineation of structures.

NEW, INTUITIVE, USER-FRIENDLY



3D Visualization:

- patient's anatomy
- room view
- geometry of the treatment field
- dose distribution
- DRR

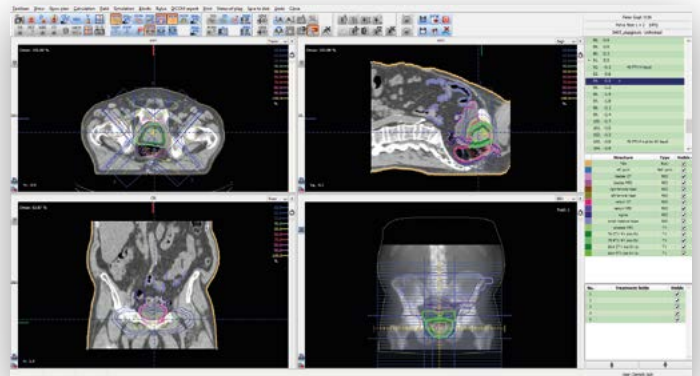
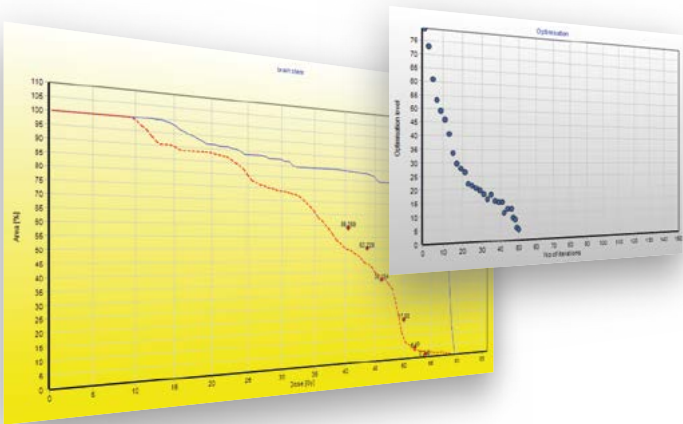
FAST AND PRECISE

- fast and precise algorithm for calculation of 3D dose distribution
- multiple criteria based optimisation
- multiprocessing support

The dose distribution is calculated in all transversal, sagittal and frontal slices.

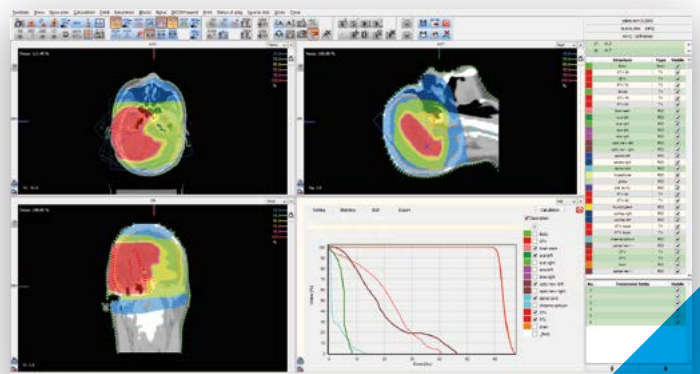
All optional features of treatment machine are included:

- asymmetric jaws
- MLC
- external, internal, dynamic wedges or omni-wedge
- standard and individual blocks



PLAN EVALUATION

- DVH calculation,
- dose statistics,
- EUD calculation,
- plans comparison and DVH comparison
- summation of plans



CE MARKING

PlanW treatment planning system maintains a quality system that complies with all essential requirements of the Medical Device Directive (93/42/EEC) and all other standards applicable there under.

CUSTOMER SERVICE AND CARE

The primary aim of our activities is the maximum customer satisfaction. UJP PRAHA Inc. provides an extensive range of services related to PlanW treatment planning system.

Our customers can acquire full confidence in the quality, reliability and precision of our products.

We focus on procedures including all activities commencing with a smooth initial installation through to a long-term reliable utilisation of the products. These activities involve:

- installation of the system at customer's place by our qualified experts
- warranty and post-warranty servicing carried by authorised personnel
- training courses and seminars conducted at customer's place or at selected and certified workplaces using our products
- permanent hot-line support via telephone, fax and e-mail

CONTACT

Please, contact us for any further information regarding PlanW or our range of other products.



UJP PRAHA a.s.
Nad Kamínkou 1345
156 10 Prague 5 – Zbraslav
Czech Republic, Europe
Phone: +420 227 180 362
Fax: +420 227 180 390
E-mail: ujp@ujp.cz
www.ujp.cz

© UJP PRAHA a.s. All Rights Reserved.

The specification contained in this brochure are for information purposes only and are subject to change without notice.

This product has come into the being thanks to the support of The Government of Czech Republic provided through development programmes of The Ministry of Industry and Commerce.